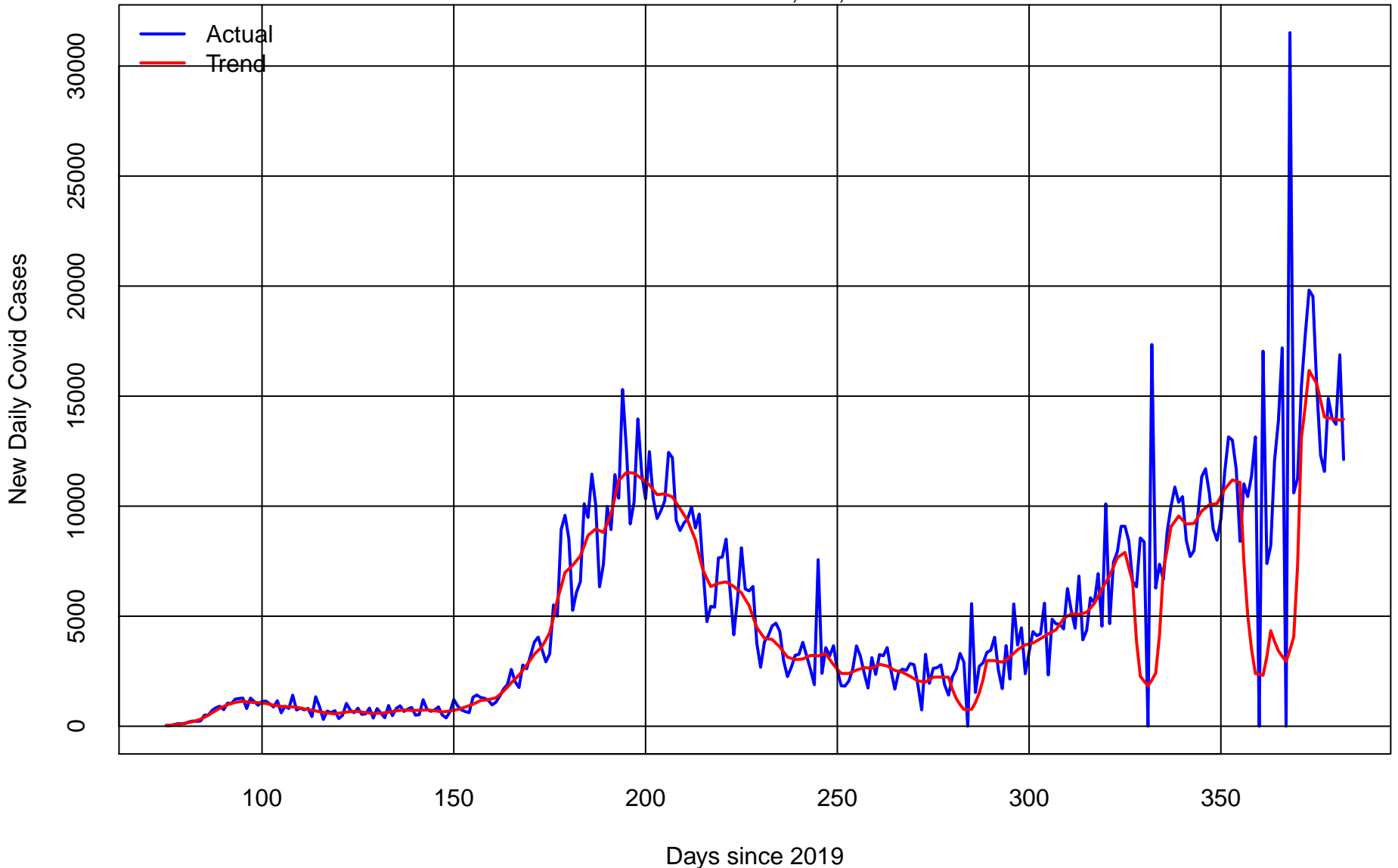


New Daily Florida Covid Cases from Mar 15 2020 to Jan 16 2021

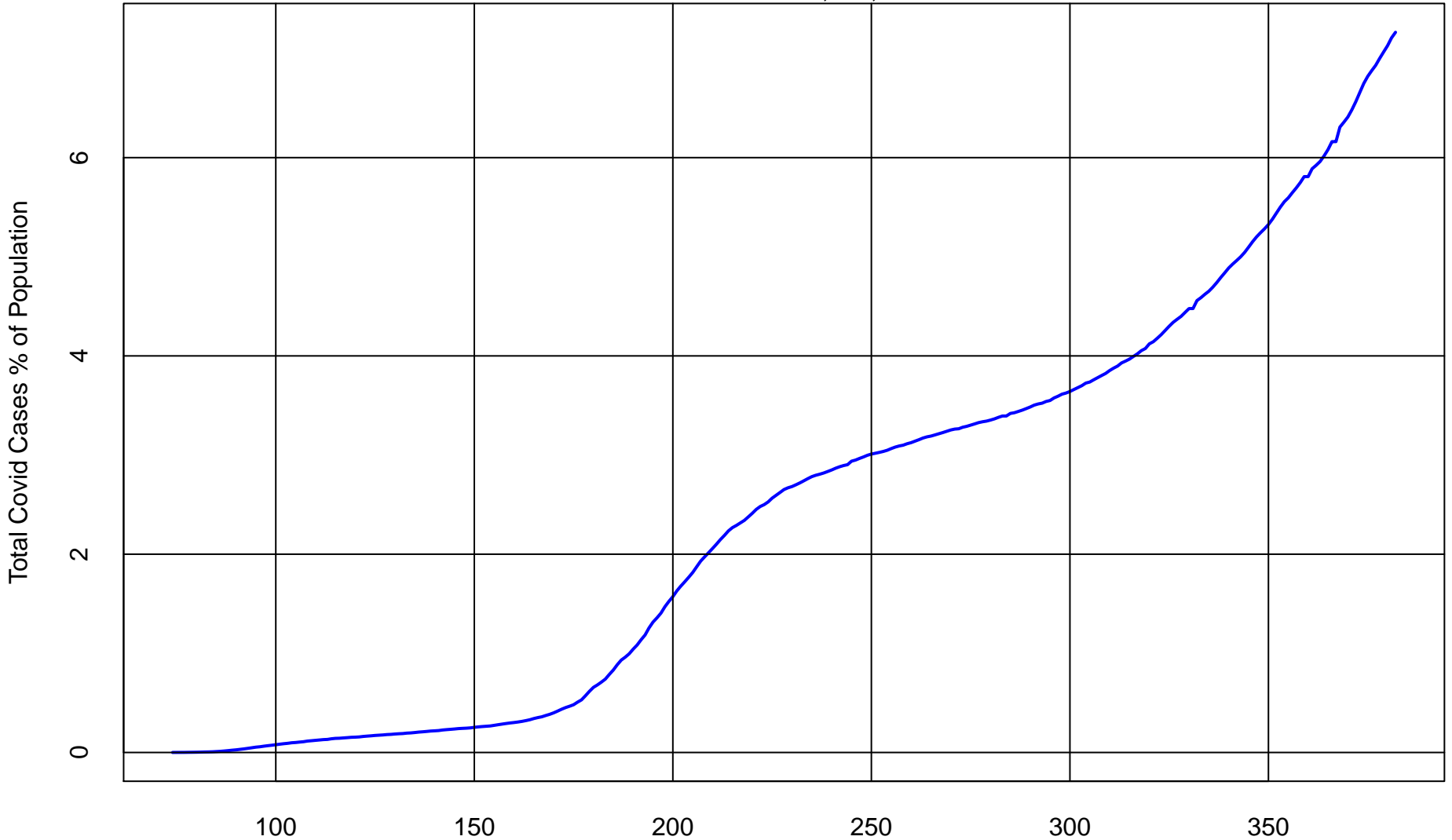
Total Cases = 1,560,178



Data from New York Times : github.com/nytimes/covid-19-data

Total Florida Covid Cases % of Population from Mar 14 2020 to Jan 16 2021

Total Cases = 1,560,178

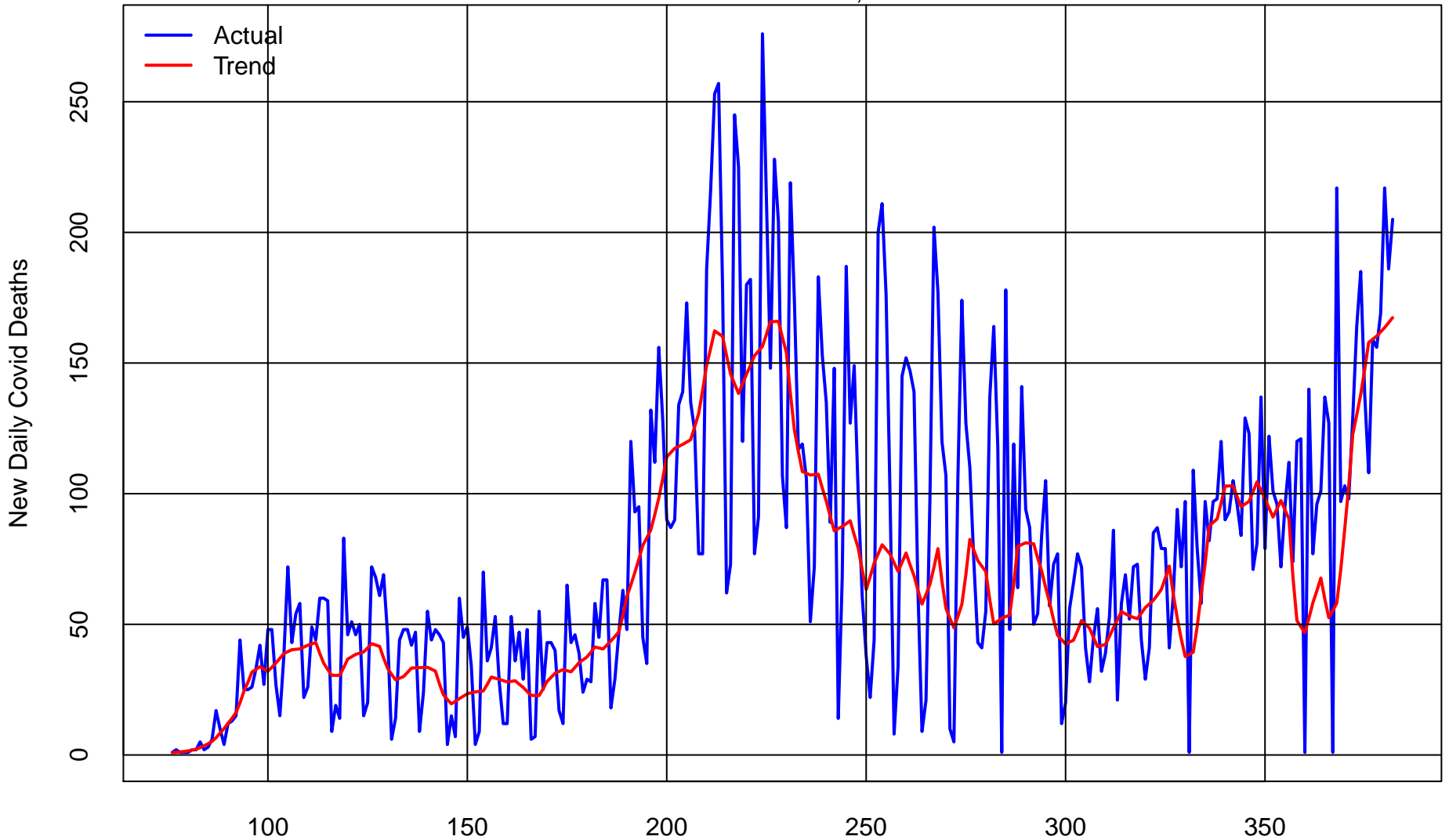


Days since 2019

Data from New York Times : github.com/nytimes/covid-19-data

New Daily Florida Covid Deaths from Mar 16 2020 to Jan 16 2021

Total Deaths = 24,003



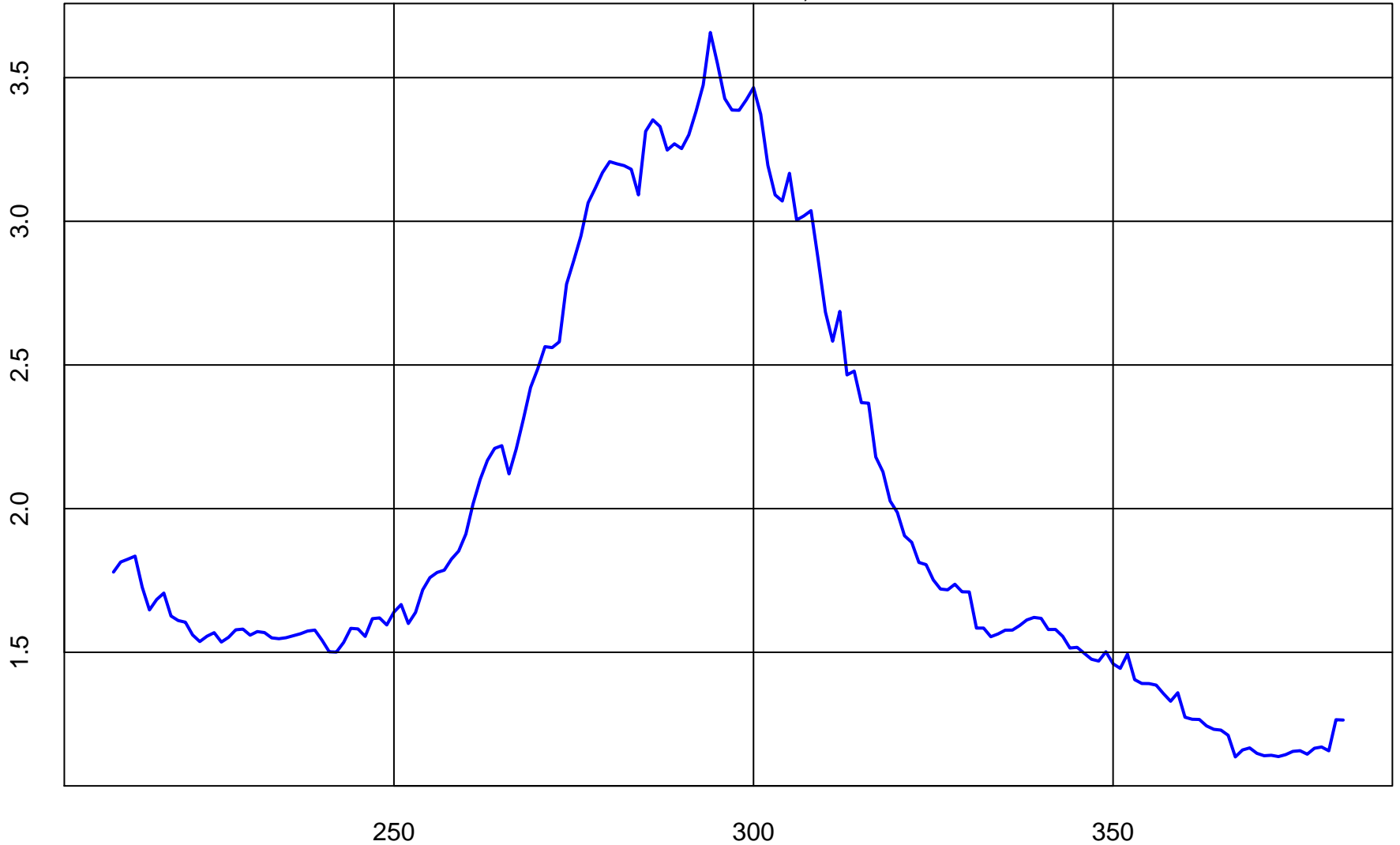
Days since 2019

Data from New York Times : github.com/nytimes/covid-19-data

Rolling Florida Covid Deaths % of Lagged Rolling Florida Covid Cases to Jan 16 2021

Total Deaths = 24,003

28-Day Rolling Covid Deaths % of Rolling Covid Cases lagged 21 Days



Days since 2019

Data from New York Times : github.com/nytimes/covid-19-data