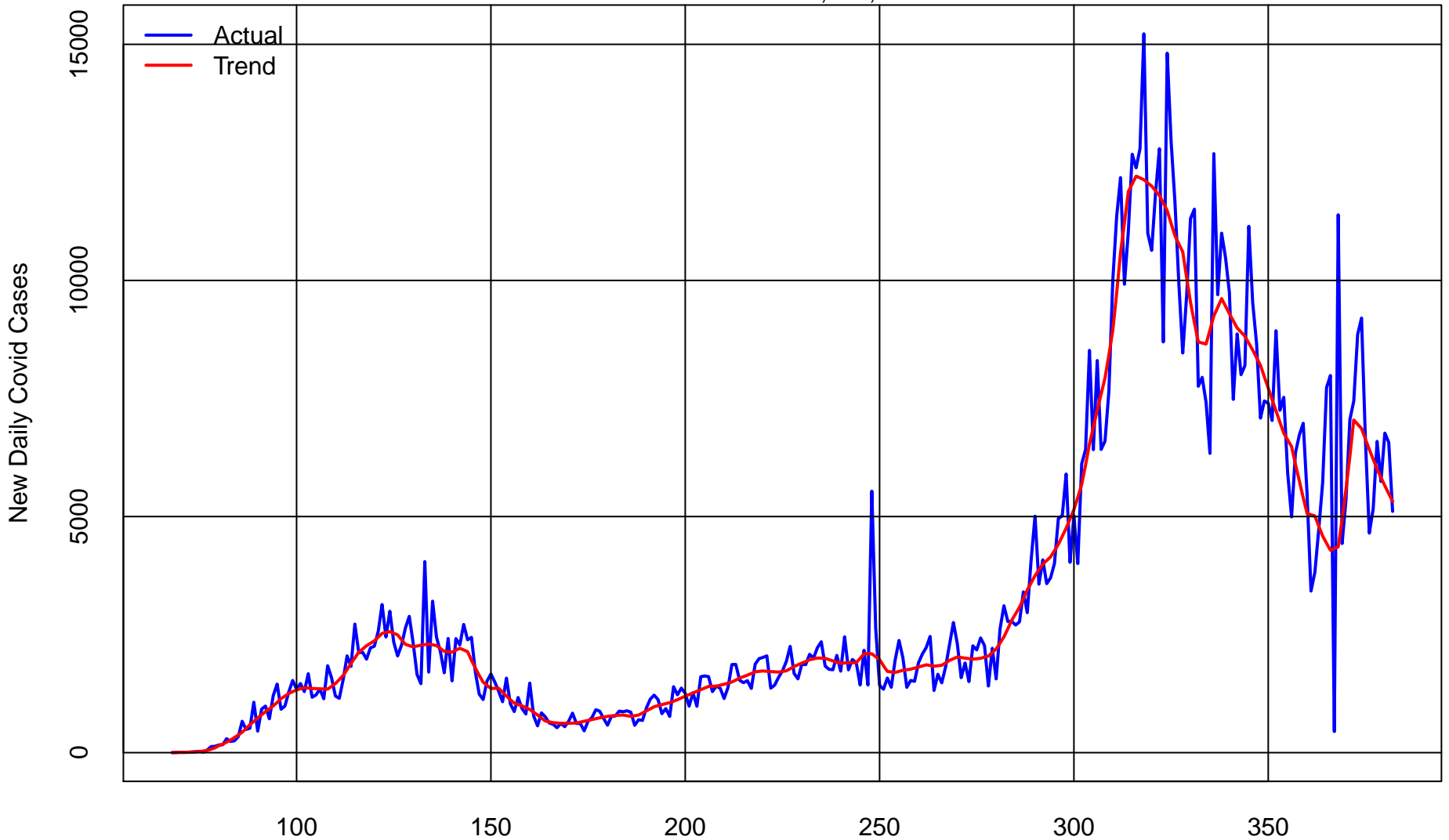


# New Daily Illinois Covid Cases from Mar 8 2020 to Jan 16 2021

Total Cases = 1,067,230

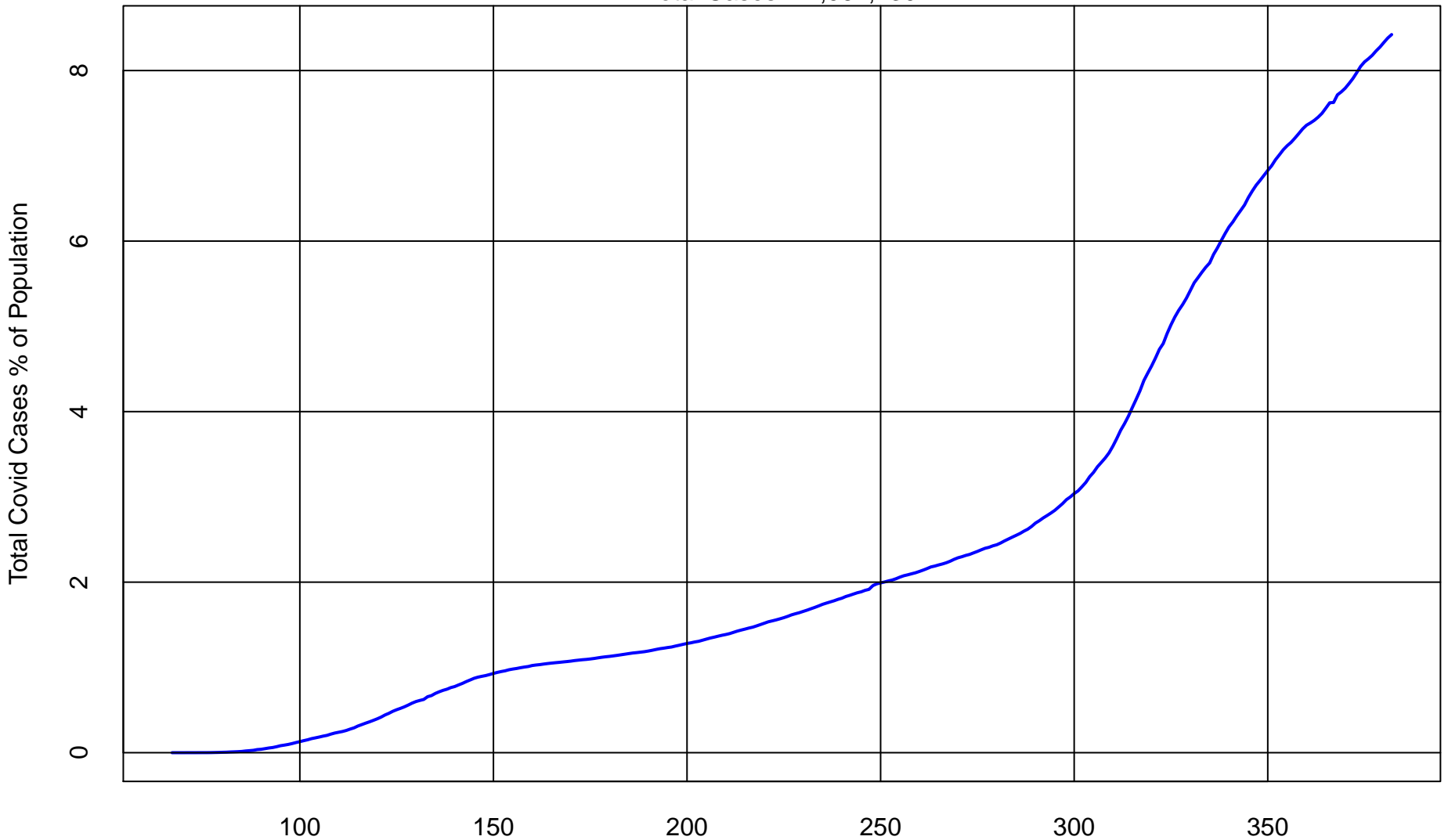


Days since 2019

Data from New York Times : [github.com/nytimes/covid-19-data](https://github.com/nytimes/covid-19-data)

# Total Illinois Covid Cases % of Population from Mar 7 2020 to Jan 16 2021

Total Cases = 1,067,230

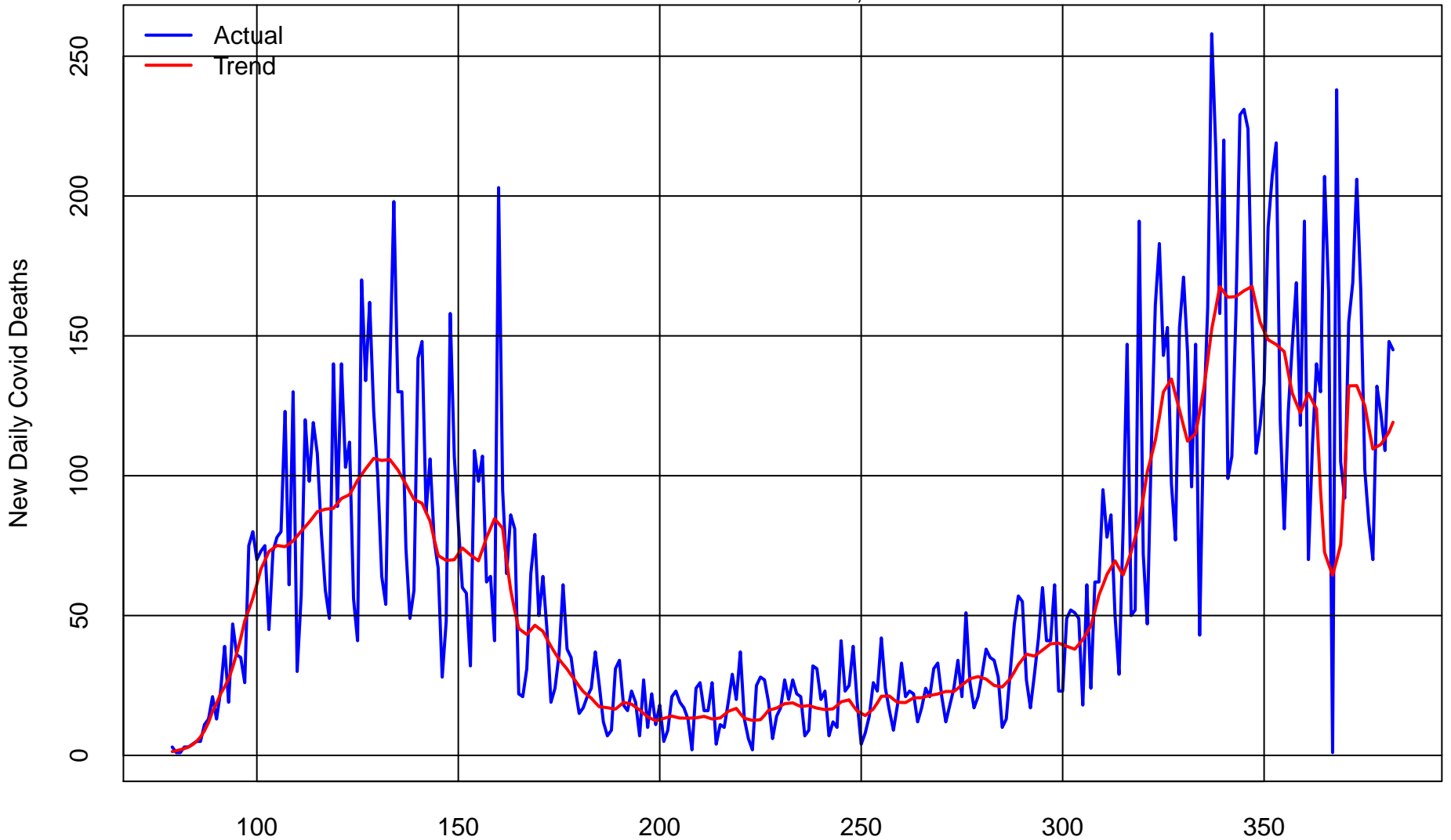


Days since 2019

Data from New York Times : [github.com/nytimes/covid-19-data](https://github.com/nytimes/covid-19-data)

# New Daily Illinois Covid Deaths from Mar 19 2020 to Jan 16 2021

Total Deaths = 20,021



Days since 2019

Data from New York Times : [github.com/nytimes/covid-19-data](https://github.com/nytimes/covid-19-data)

# Rolling Illinois Covid Deaths % of Lagged Rolling Illinois Covid Cases to Jan 16 2021

Total Deaths = 20,021

28-Day Rolling Covid Deaths % of Rolling Covid Cases lagged 21 Days



Days since 2019

Data from New York Times : [github.com/nytimes/covid-19-data](https://github.com/nytimes/covid-19-data)