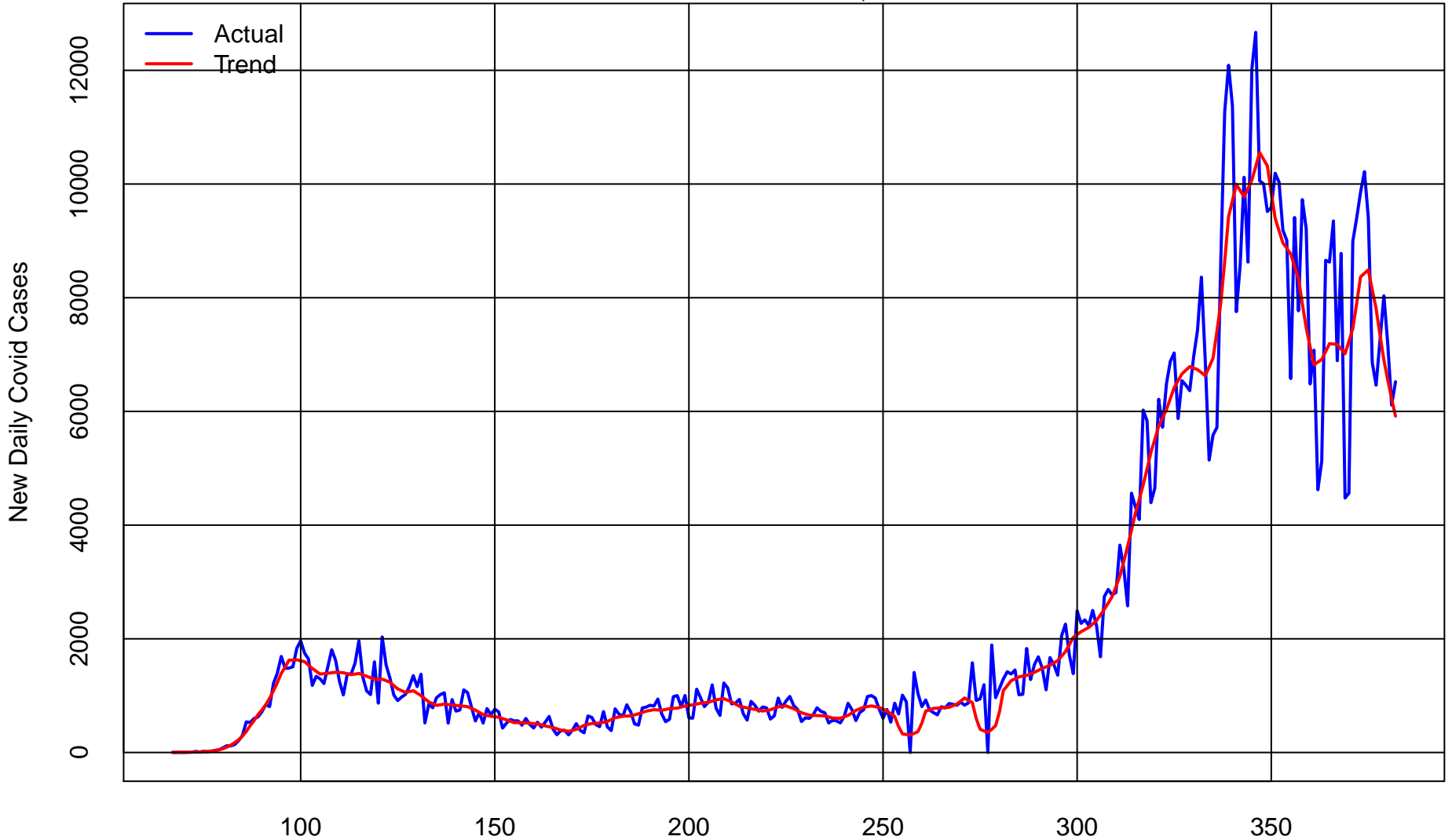


# New Daily Pennsylvania Covid Cases from Mar 7 2020 to Jan 16 2021

Total Cases = 767,074

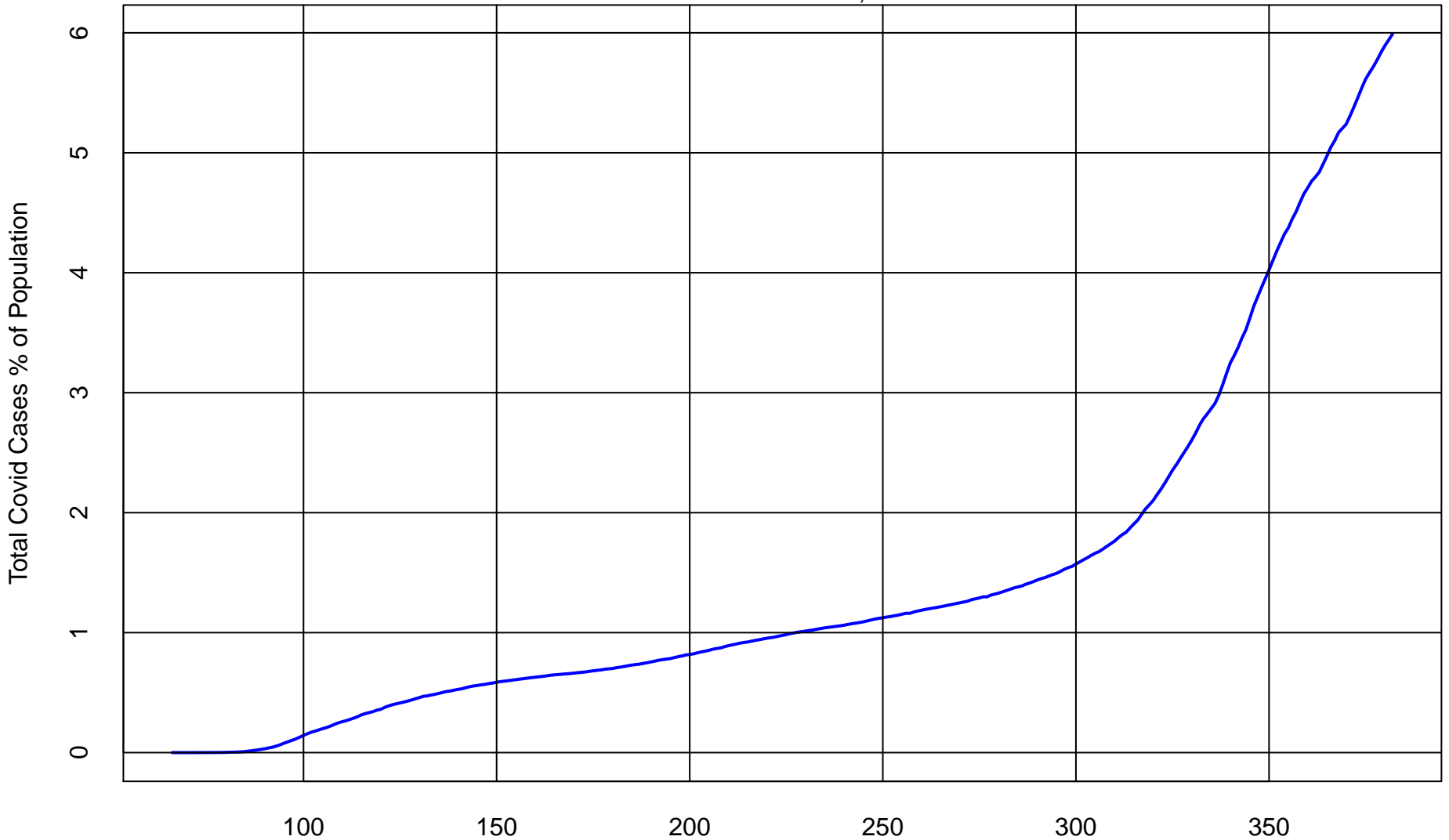


Days since 2019

Data from New York Times : [github.com/nytimes/covid-19-data](https://github.com/nytimes/covid-19-data)

# Total Pennsylvania Covid Cases % of Population from Mar 6 2020 to Jan 16 2021

Total Cases = 767,074

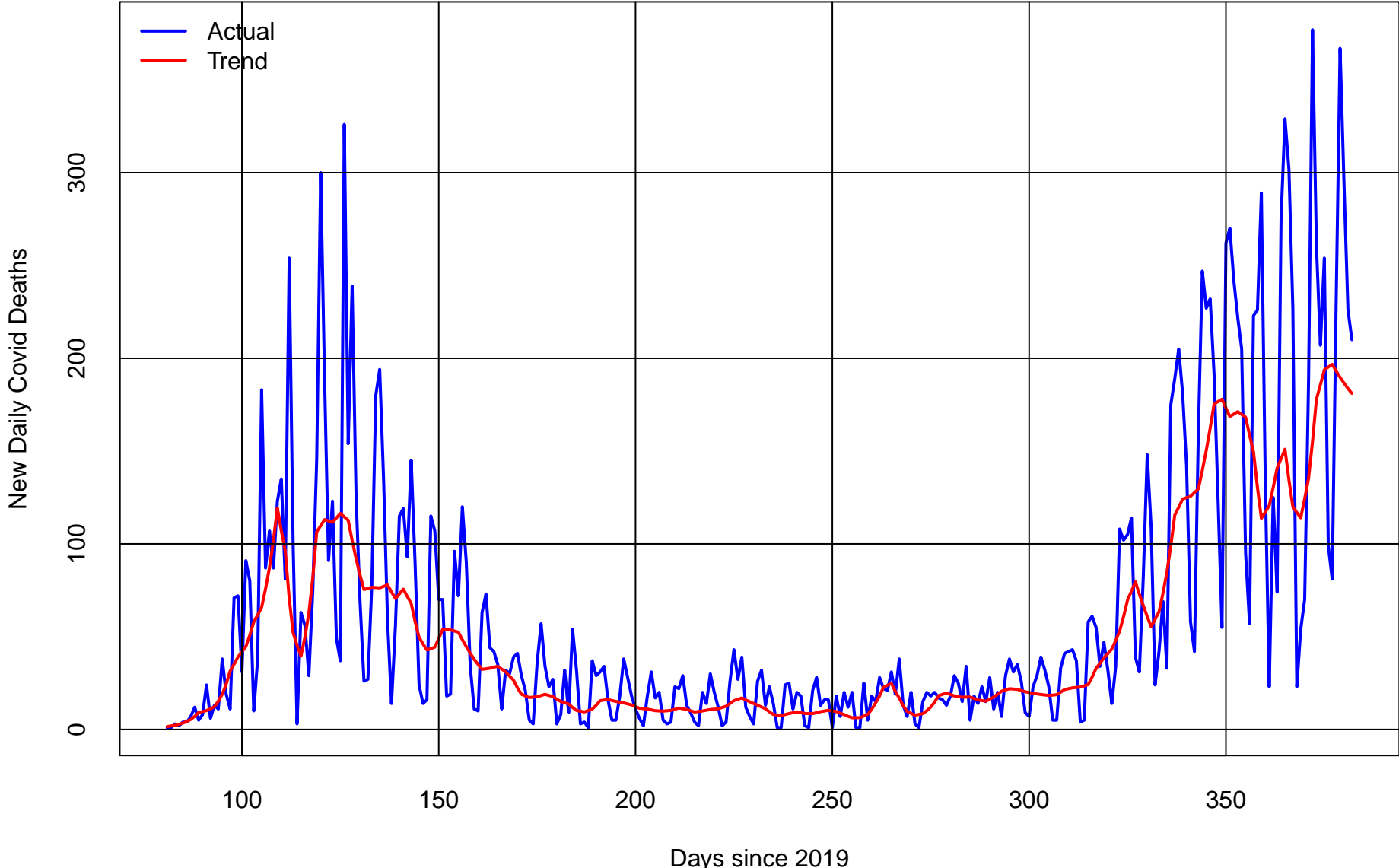


Days since 2019

Data from New York Times : [github.com/nytimes/covid-19-data](https://github.com/nytimes/covid-19-data)

# New Daily Pennsylvania Covid Deaths from Mar 21 2020 to Jan 16 2021

Total Deaths = 19,188

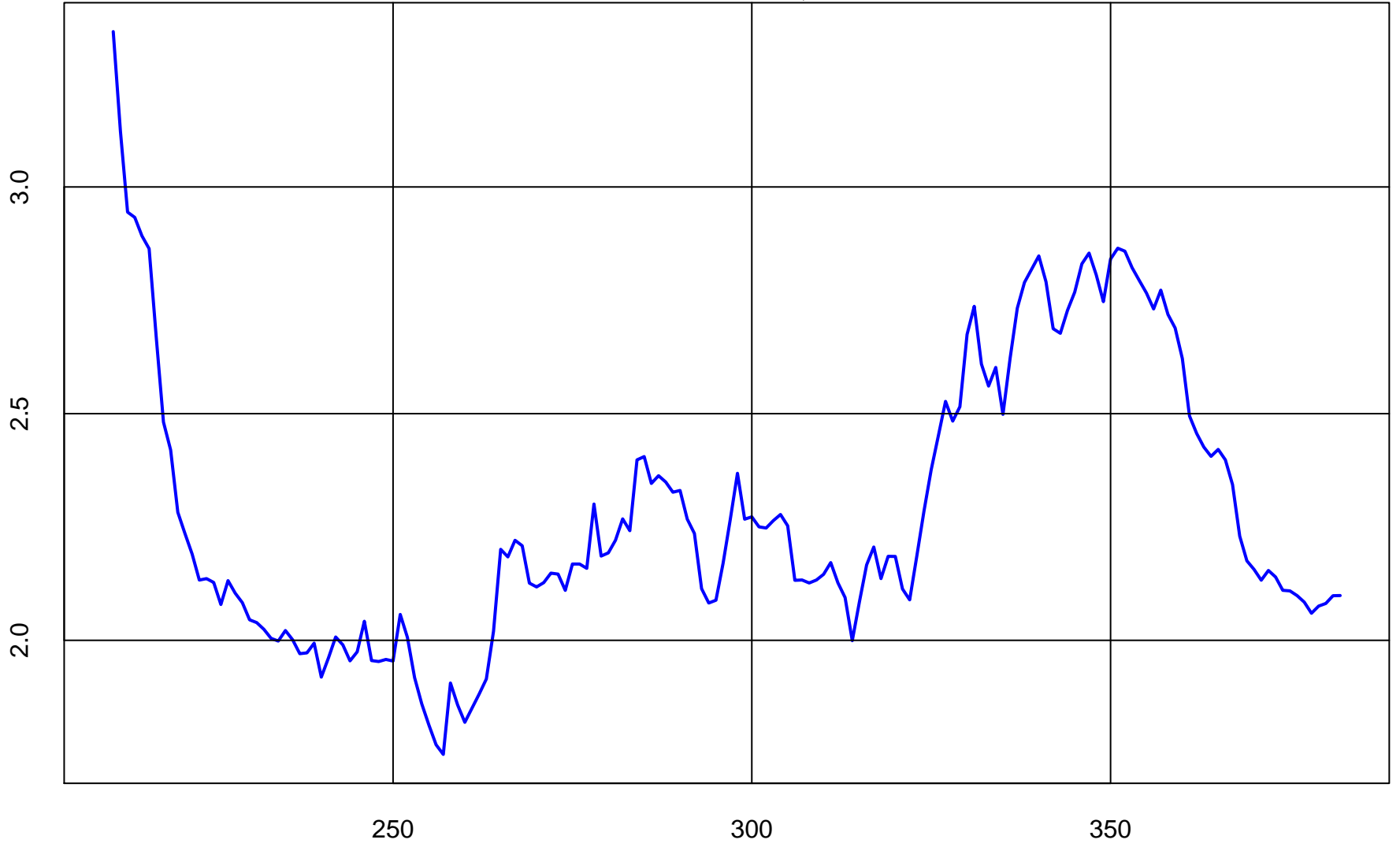


Data from New York Times : [github.com/nytimes/covid-19-data](https://github.com/nytimes/covid-19-data)

# Rolling Pennsylvania Covid Deaths % of Lagged Rolling Pennsylvania Covid Cases to Jan 16 2021

Total Deaths = 19,188

28-Day Rolling Covid Deaths % of Rolling Covid Cases lagged 21 Days



Days since 2019

Data from New York Times : [github.com/nytimes/covid-19-data](https://github.com/nytimes/covid-19-data)